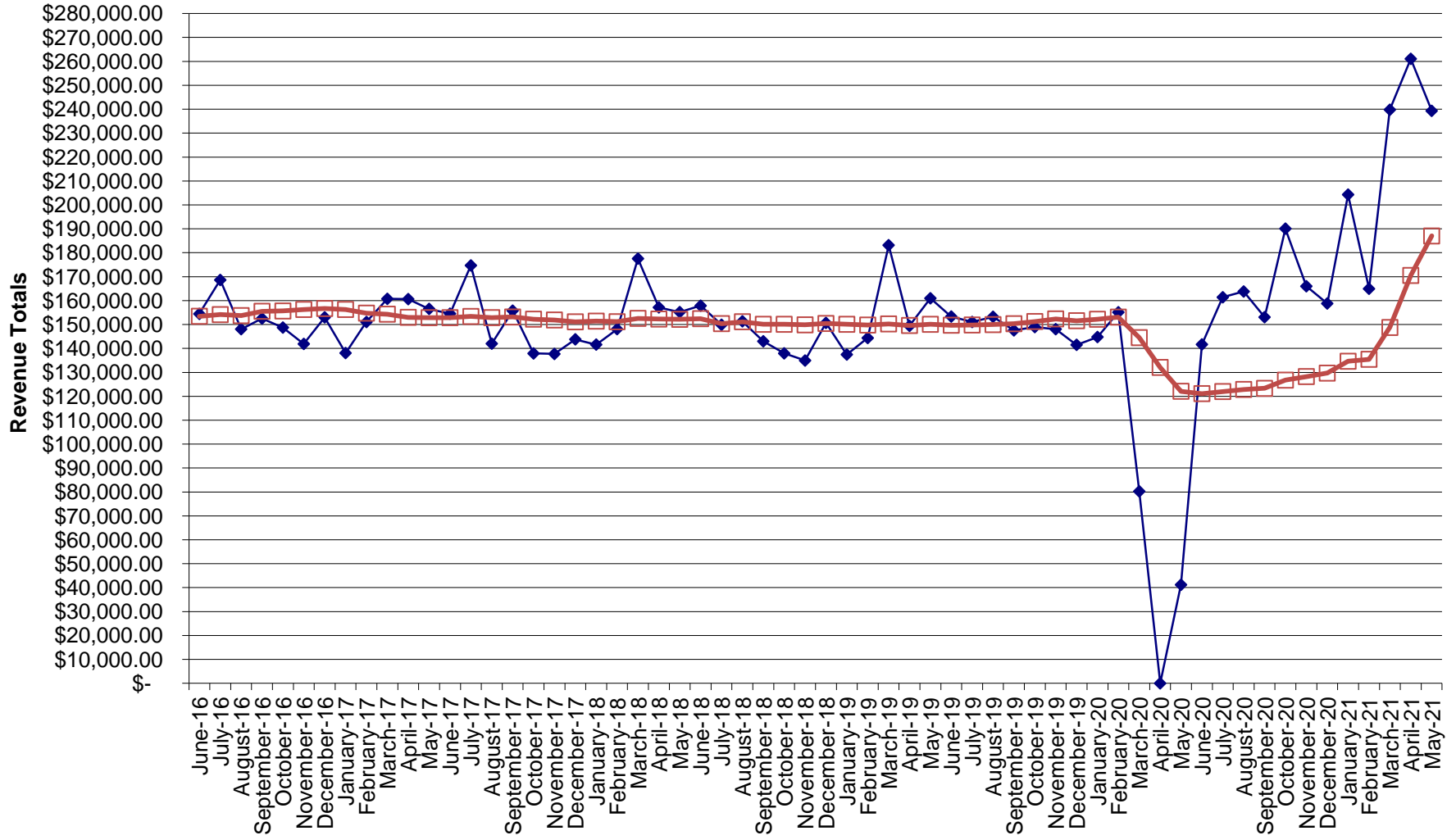


Gaming Revenue

Actual 12 Mo Average



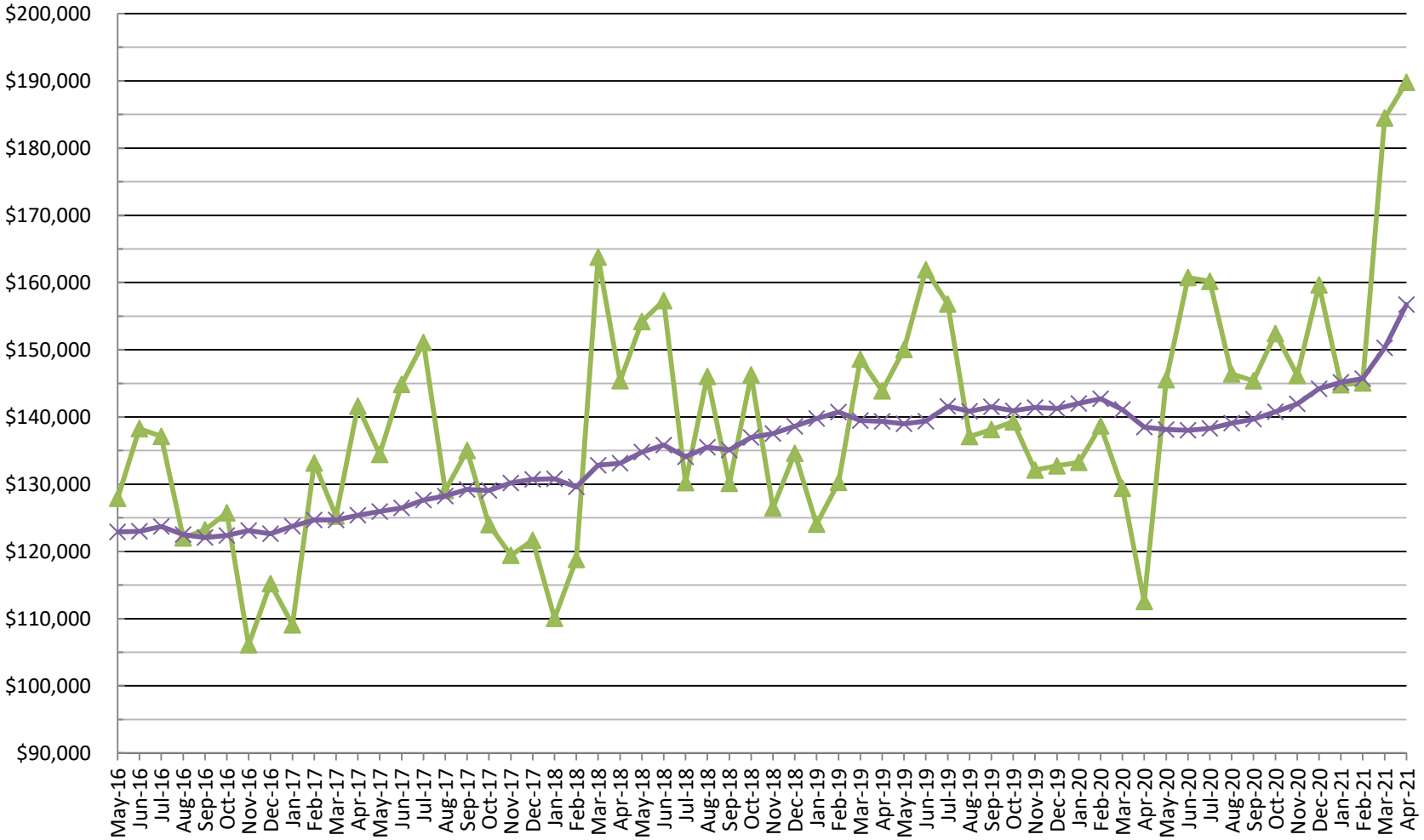
Hollywood Gaming Revenue
City of Bay Saint Louis

	Actual	12 Month Average
Oct. '11	\$ 158,699.02	
Nov. '11	\$ 151,857.54	
Dec. '11	\$ 175,778.86	
Jan. '12	\$ 159,290.86	
Feb. '12	\$ 185,050.35	
March '12	\$ 185,096.61	
April '12	\$ 177,347.18	
May '12	\$ 170,776.70	
June '12	\$ 183,036.12	
July '12	\$ 183,467.55	
Aug. '12	\$ 156,809.59	
Sept. '12	\$ 151,452.71	169,888.59
Oct. '12	\$ 152,309.78	169,356.15
Nov. '12	\$ 149,938.00	169,196.19
Dec. '12	\$ 174,891.82	169,122.27
Jan. '13	\$ 140,988.93	167,597.11
Feb. '13	\$ 167,864.51	166,164.96
March '13	\$ 190,791.15	166,639.50
April '13	\$ 164,665.14	165,582.67
May '13	\$ 175,501.54	165,976.40
June '13	\$ 154,875.81	163,629.71

	Actual	12 Month Average
July-13	\$ 173,302.29	162,782.61
August-13	\$ 166,565.21	163,595.57
September-13	\$ 144,128.18	162,985.20
October-13	\$ 133,009.88	161,376.87
November-13	\$ 157,827.61	162,034.34
December-13	\$ 154,815.74	160,361.33
January-14	\$ 146,785.40	160,844.37
February-14	\$ 158,507.87	160,064.65
March-14	\$ 199,286.99	160,772.64
April-14	\$ 161,351.35	160,496.49
May-14	\$ 174,727.94	160,432.02
June-14	\$ 168,837.75	161,595.52
July-14	\$ 177,348.06	161,932.67
August-14	\$ 177,416.74	162,836.96
September-14	\$ 144,439.86	162,862.93
October-14	\$ 150,686.35	164,335.97
November-14	\$ 151,627.45	163,819.29
December-14	\$ 154,654.29	163,805.84
January-15	\$ 161,806.66	165,057.61
February-15	\$ 163,774.50	165,496.50
March-15	\$ 160,369.09	162,253.34
April-15	\$ 163,278.79	162,413.96
May-15	\$ 177,442.27	162,640.15
June-15	\$ 145,321.00	160,680.42
July-15	\$ 160,270.86	159,257.32
August-15	\$ 153,160.54	157,235.97
September-15	\$ 130,831.12	156,101.91
October-15	\$ 147,224.31	155,813.41
November-15	\$ 134,365.03	154,374.87
December-15	\$ 148,141.11	153,832.11
January-16	\$ 142,901.20	152,256.65
February-16	\$ 169,427.41	152,727.73
March-16	\$ 165,961.01	153,193.72
April-16	\$ 176,412.90	154,288.23
May-16	\$ 158,287.80	152,692.02
June-16	\$ 154,448.88	153,452.68
July-16	\$ 168,616.38	154,148.14
August-16	\$ 148,059.50	153,723.05
September-16	\$ 152,519.05	155,530.38
October-16	\$ 148,729.86	155,655.84
November-16	\$ 141,884.29	156,282.45
December-16	\$ 153,004.75	156,687.75
January-17	\$ 138,079.41	156,285.94
February-17	\$ 151,051.13	154,754.58
March-17	\$ 160,735.81	154,319.15
April-17	\$ 160,618.66	153,002.96
May-17	\$ 156,530.29	152,856.50
June-17	\$ 154,522.12	152,862.60
July-17	\$ 174,694.64	153,369.13
August-17	\$ 142,008.06	152,864.84
September-17	\$ 155,791.39	153,137.53
October-17	\$ 137,901.26	152,235.15
November-17	\$ 137,696.53	151,886.17
December-17	\$ 143,800.85	151,119.18
January-18	\$ 141,614.90	151,413.80
February-18	\$ 148,077.56	151,166.01
March-18	\$ 177,544.37	152,566.72
April-18	\$ 157,158.81	152,278.40
May-18	\$ 155,188.04	152,166.54
June-18	\$ 157,849.57	152,443.83
July-18	\$ 149,897.59	150,377.41
August-18	\$ 151,337.07	151,154.83
September-18	\$ 142,982.45	150,087.42
October-18	\$ 137,936.06	150,090.32
November-18	\$ 134,941.35	149,860.72
December-18	\$ 150,673.47	150,433.44
January-19	\$ 137,443.31	150,085.80
February-19	\$ 144,362.88	149,776.25
March-19	\$ 183,159.31	150,244.16
April-19	\$ 149,436.08	149,600.60
May-19	\$ 160,964.33	150,081.96
June-19	\$ 153,328.99	149,705.24
July-19	\$ 151,069.38	149,802.89
August-19	\$ 153,228.11	149,960.48
September-19	\$ 147,551.37	150,341.22
October-19	\$ 148,930.83	151,257.45
November-19	\$ 148,056.64	152,350.39
December-19	\$ 141,508.72	151,586.66
January-20	\$ 144,773.03	152,197.47
February-20	\$ 155,123.22	153,094.17
March-20	\$ 80,257.76	144,519.04
April-20	\$ -	132,066.03
May-20	\$ 41,205.94	122,086.17
June-20	\$ 141,680.01	121,115.42
July-20	\$ 161,392.99	121,975.72
August-20	\$ 163,791.05	122,855.96
September-20	\$ 153,074.28	123,316.21
October-20	\$ 190,073.29	126,744.74
November-20	\$ 165,991.19	128,239.29
December-20	\$ 158,790.51	129,679.44
January-21	\$ 204,307.65	134,640.66
February-21	\$ 164,942.37	135,458.92
March-21	\$ 239,784.98	148,752.86
April-21	\$ 261,055.92	170,507.52
May-21	\$ 239,319.57	187,016.98

Sales Tax

Actual
12 Mo Average



SALES TAX
City of Bay Saint Louis

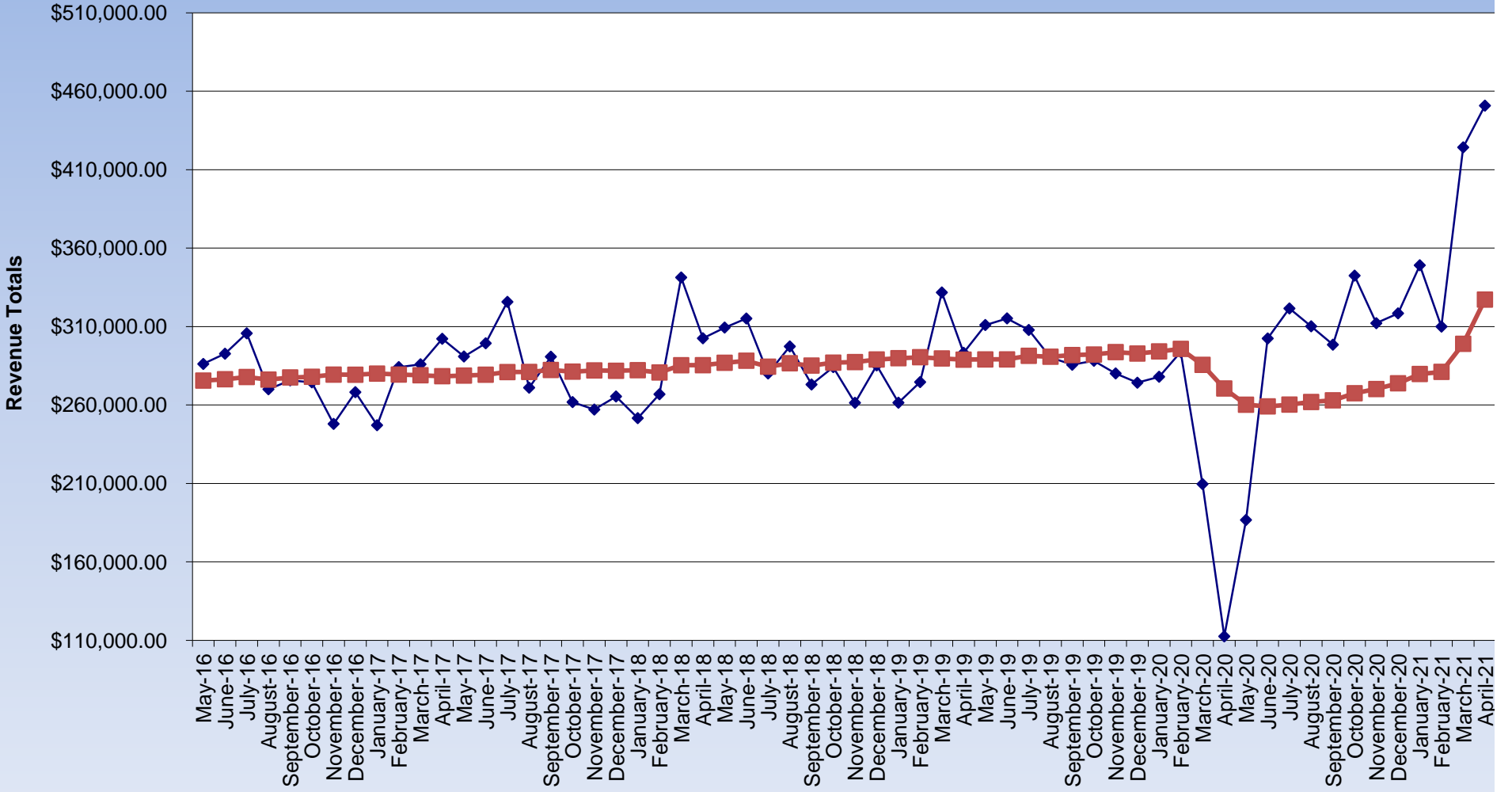
Sales Tax Data	Actual	12 Month Average
Oct. '11	\$ 97,759.96	
Nov. '11	\$ 79,983.70	
Dec. '11	\$ 91,241.62	
Jan. '12	\$ 81,160.97	
Feb. '12	\$ 84,289.98	
March '12	\$ 93,062.99	
April '12	\$ 108,535.09	
May '12	\$ 112,419.77	
June '12	\$ 102,831.54	
July '12	\$ 107,406.20	
August '12	\$ 87,399.40	
Sept. '12	\$ 88,627.08	94,559.86
Oct. '12	\$ 95,359.49	94,359.82
Nov. '12	\$ 93,113.16	95,453.94
Dec. '12	\$ 147,776.59	100,165.19
Jan. '13	\$ 123,857.42	103,723.23
Feb. '13	\$ 97,933.82	104,860.21
March '13	\$ 106,465.94	105,977.13
April '13	\$ 125,817.81	107,417.35
May '13	\$ 107,723.39	107,025.99
June '13	\$ 114,740.45	108,018.40

Sales Tax Data	Actual	12 Month Average		
July-13	\$ 116,112.65	108,743.93		
August-13	\$ 105,412.24	110,245.00		
September-13	\$ 101,198.12	111,292.59		
October-13	\$ 98,677.18	111,569.06		
November-13	\$ 108,663.37	112,864.92		
December-13	\$ 95,504.62	108,508.92		
January-14	\$ 90,526.57	105,731.35		
February-14	\$ 95,932.77	105,564.59		
March-14	\$ 106,207.55	105,543.06		
April-14	\$ 105,106.90	103,817.15		
May-14	\$ 126,780.42	105,405.24		
June-14	\$ 122,329.65	106,037.67		
July-14	\$ 123,990.22	106,694.13		
August-14	\$ 123,558.68	108,206.34		
September-14	\$ 121,283.21	109,880.10	-1%	
October-14	\$ 117,156.00	111,420.00		18,478.82
November-14	\$ 100,441.29	110,734.82		(8,222.08)
December-14	\$ 122,840.42	113,012.81		27,335.80
January-15	\$ 103,007.93	114,052.92		12,481.36
February-15	\$ 112,139.88	115,403.51		16,207.11
March-15	\$ 127,266.63	117,158.44		21,059.08
April-15	\$ 123,547.97	118,695.19		18,441.07
May-15	\$ 135,801.78	119,446.97		9,021.36
June-15	\$ 137,144.71	120,681.56		14,815.06
July-15	\$ 128,476.43	121,055.41		4,486.21
August-15	\$ 136,556.55	122,138.57		12,997.87
September-15	\$ 128,445.30	122,735.41	0.5%	7,162.09
October-15	\$ 122,274.73	123,161.97	0.3%	5,118.73
November-15	\$ 97,130.45	122,886.07	-0.2%	(3,310.84)
December-15	\$ 120,925.72	122,726.51	-0.1%	(1,914.70)
January-16	\$ 95,640.79	122,112.58	-0.5%	(7,367.14)
February-16	\$ 122,075.00	122,940.51	0.7%	9,935.12
March-16	\$ 125,126.47	122,762.16	-0.1%	(2,140.16)
April-16	\$ 133,168.61	123,563.88	0.7%	9,620.64
May-16	\$ 127,903.39	122,905.68	-0.5%	(7,898.39)
June-16	\$ 138,277.35	123,000.07	0.1%	1,132.64
July-16	\$ 137,112.05	123,719.70	0.6%	8,635.62
August-16	\$ 122,011.77	122,507.64	-1.0%	(14,544.78)
September-16	\$ 123,214.13	122,071.71	-0.4%	(5,231.17)
October-16	\$ 125,742.18	122,360.66	0.2%	3,467.45
November-16	\$ 106,107.91	123,108.78	0.6%	8,977.46
December-16	\$ 115,211.30	122,632.58	-0.4%	(5,714.42)
January-17	\$ 109,074.30	123,752.04	0.9%	13,433.51
February-17	\$ 133,149.53	124,674.92	0.7%	11,074.53
March-17	\$ 125,256.31	124,685.74	0.0%	129.84
April-17	\$ 141,620.01	125,390.02	0.6%	8,451.40
May-17	\$ 134,431.96	125,934.07	0.4%	6,528.57
June-17	\$ 144,846.30	126,481.48	0.4%	6,568.95
July-17	\$ 151,079.81	127,645.46	0.9%	13,967.76
August-17	\$ 129,071.59	128,233.78	0.5%	7,059.82
September-17	\$ 135,021.27	129,217.71	0.8%	11,807.14
October-17	\$ 123,988.86	129,071.60	-0.1%	(1,753.32)
November-17	\$ 119,430.07	130,181.78	0.9%	13,322.16
December-17	\$ 121,687.55	130,719.80	0.4%	6,456.25
January-18	\$ 110,050.04	130,801.11	0.1%	975.74
February-18	\$ 118,909.67	129,606.12	-0.9%	(14,339.86)
March-18	\$ 163,782.62	132,816.65	2.5%	38,526.31
April-18	\$ 145,400.13	133,131.66	0.2%	3,780.12
May-18	\$ 154,206.86	134,779.56	1.2%	19,774.90
June-18	\$ 157,316.21	135,818.72	0.8%	12,469.91
July-18	\$ 130,237.43	134,081.86	-1.3%	(20,842.38)
August-18	\$ 146,029.95	135,495.06	1.1%	16,958.36
September-18	\$ 130,130.39	135,087.48	-0.3%	(4,890.88)
October-18	\$ 146,257.29	136,943.18	1.4%	22,268.43
November-18	\$ 126,487.42	137,531.30	0.4%	7,057.35
December-18	\$ 134,605.78	138,609.48	0.8%	12,938.23
January-19	\$ 124,058.02	139,776.81	0.8%	14,007.98
February-19	\$ 130,276.13	140,732.35	0.7%	11,466.46
March-19	\$ 148,613.27	139,468.24	-0.9%	(15,169.35)
April-19	\$ 143,889.36	139,342.34	-0.1%	(1,510.77)
May-19	\$ 150,048.93	138,995.85	-0.2%	(4,157.93)
June-19	\$ 161,909.08	139,378.59	0.3%	4,592.87
July-19	\$ 156,798.02	141,591.97	1.6%	26,560.59
August-19	\$ 137,090.02	140,846.98	-0.5%	(8,939.93)
September-19	\$ 138,138.49	141,514.32	0.5%	8,008.10
October-19	\$ 139,286.56	140,933.42	-0.4%	(6,970.73)
November-19	\$ 132,106.61	141,401.69	0.3%	5,619.19
December-19	\$ 132,731.91	141,245.53	-0.1%	(1,873.87)
January-20	\$ 133,255.00	142,011.95	0.5%	9,196.98
February-20	\$ 138,676.26	142,711.96	0.5%	8,400.13
March-20	\$ 129,391.99	141,110.19	-1.1%	(19,221.28)
April-20	\$ 112,555.10	138,499.00	-1.9%	(31,334.26)
May-20	\$ 145,544.76	138,123.65	-0.3%	(4,504.17)
June-20	\$ 160,757.84	138,027.71	-0.1%	(1,151.24)
July-20	\$ 160,184.69	138,309.94	0.2%	3,386.67
August-20	\$ 146,406.43	139,086.30	0.6%	9,316.41
September-20	\$ 145,394.21	139,690.95	0.4%	7,255.72
October-20	\$ 152,416.43	140,785.10	0.8%	13,129.87
November-20	\$ 146,189.38	141,958.67	0.8%	14,082.77
December-20	\$ 159,650.97	144,201.92	1.6%	26,919.06
January-21	\$ 144,795.21	145,163.61	0.7%	11,540.21
February-21	\$ 145,070.72	145,696.48	0.4%	6,394.46
March-21	\$ 184,494.00	150,288.31	3.2%	55,102.01
April-21	\$ 189,789.96	156,724.55	4.3%	77,234.86

\$36,000.00

Combined Revenue

Series1 Series2



Combined		
Data	Actual	12 Month Average
Oct. '11	\$ 97,759.96	
Nov. '11	\$ 79,983.70	
Dec. '11	\$ 91,241.62	
Jan. '12	\$ 81,160.97	
Feb. '12	\$ 84,289.98	
March '12	\$ 93,062.99	
April '12	\$ 108,535.09	
May '12	\$ 112,419.77	
June '12	\$ 102,831.54	
July '12	\$ 107,406.20	
August '12	\$ 87,399.40	
Sept. '12	\$ 88,627.08	94,559.86
Oct. '12	\$ 95,359.49	94,359.82
Nov. '12	\$ 93,113.16	95,453.94
Dec. '12	\$ 147,776.59	100,165.19

Combined		
Data	Actual	12 Month Average
Jan. '13	\$ 264,846.35	\$ 271,320.34
Feb. '13	\$ 265,798.33	\$ 271,025.17
March '13	\$ 297,257.09	\$ 272,616.63
April '13	\$ 290,482.95	\$ 273,000.02
May '13	\$ 283,224.93	\$ 273,002.39
June '13	\$ 269,616.26	\$ 271,648.11
July '13	\$ 289,414.94	\$ 271,526.54
August '13	\$ 271,977.45	\$ 273,840.58
Sept '13	\$ 245,326.30	\$ 274,277.79
Oct. '13	\$ 231,687.06	\$ 272,945.94
Nov. '13	\$ 266,490.98	\$ 274,899.25
Dec. '13	\$ 250,320.36	\$ 268,870.25
January-14	\$ 237,311.97	\$ 266,575.72
February-14	\$ 254,440.64	\$ 265,629.24
March-14	\$ 305,494.54	\$ 266,315.70
April-14	\$ 266,458.25	\$ 264,313.64
May-14	\$ 301,508.36	\$ 265,837.26
June-14	\$ 291,167.40	\$ 267,633.19
July-14	\$ 301,338.28	\$ 268,626.80
August-14	\$ 300,975.42	\$ 271,043.30
September-14	\$ 265,723.07	\$ 272,743.03
October-14	\$ 267,842.35	\$ 275,755.97
November-14	\$ 252,068.74	\$ 274,554.12
December-14	\$ 277,494.71	\$ 276,818.64
January-15	\$ 264,814.59	\$ 279,110.53
February-15	\$ 275,914.38	\$ 280,900.01
March-15	\$ 287,635.72	\$ 279,411.77
April-15	\$ 286,826.76	\$ 281,109.15
May-15	\$ 313,244.05	\$ 282,087.12
June-15	\$ 282,465.71	\$ 281,361.98
July-15	\$ 288,747.29	\$ 280,312.73
August-15	\$ 289,717.09	\$ 279,374.54
September-15	\$ 259,276.42	\$ 278,837.32
October-15	\$ 269,499.04	\$ 278,975.38
November-15	\$ 231,495.48	\$ 277,260.94
December-15	\$ 269,066.83	\$ 276,558.61
January-16	\$ 238,541.99	\$ 274,369.23
February-16	\$ 291,502.41	\$ 275,668.23
March-16	\$ 291,087.48	\$ 275,955.88
April-16	\$ 309,581.51	\$ 277,852.11
May-16	\$ 286,191.19	\$ 275,597.70
June-16	\$ 292,726.23	\$ 276,452.75
July-16	\$ 305,728.43	\$ 277,867.84
August-16	\$ 270,071.27	\$ 276,230.69
September-16	\$ 275,733.18	\$ 277,602.09
October-16	\$ 274,472.04	\$ 278,016.50
November-16	\$ 247,992.20	\$ 279,391.23
December-16	\$ 268,216.05	\$ 279,320.33
January-17	\$ 247,153.71	\$ 280,037.98
February-17	\$ 284,200.66	\$ 279,429.50
March-17	\$ 285,992.12	\$ 279,004.88
April-17	\$ 302,238.67	\$ 278,392.98
May-17	\$ 290,962.25	\$ 278,790.57
June-17	\$ 299,368.42	\$ 279,344.08
July-17	\$ 325,774.45	\$ 281,014.59
August-17	\$ 271,079.65	\$ 281,098.62
September-17	\$ 290,812.66	\$ 282,355.24
October-17	\$ 261,890.12	\$ 281,306.75
November-17	\$ 257,126.60	\$ 282,067.95
December-17	\$ 265,468.40	\$ 281,839.98
January-18	\$ 251,664.94	\$ 282,214.91
February-18	\$ 265,687.23	\$ 280,772.13
March-18	\$ 341,326.99	\$ 285,383.37
April-18	\$ 302,558.94	\$ 285,410.05
May-18	\$ 309,394.90	\$ 286,946.11
June-18	\$ 315,165.78	\$ 288,262.56
July-18	\$ 280,135.02	\$ 284,459.27
August-18	\$ 297,367.02	\$ 286,649.88
September-18	\$ 273,112.84	\$ 285,174.90
October-18	\$ 284,193.35	\$ 287,033.50
November-18	\$ 261,428.77	\$ 287,392.02
December-18	\$ 285,279.25	\$ 289,042.92
January-19	\$ 261,501.33	\$ 289,862.62
February-19	\$ 274,639.01	\$ 290,508.60
March-19	\$ 331,772.58	\$ 289,712.40
April-19	\$ 293,325.44	\$ 288,942.94
May-19	\$ 311,013.26	\$ 289,077.80
June-19	\$ 315,238.07	\$ 289,083.83
July-19	\$ 307,867.40	\$ 291,394.86
August-19	\$ 290,318.13	\$ 290,807.45
September-19	\$ 285,689.86	\$ 291,855.54
October-19	\$ 288,217.39	\$ 292,190.87
November-19	\$ 280,163.25	\$ 293,752.08
December-19	\$ 274,240.63	\$ 292,832.20
January-20	\$ 278,028.03	\$ 294,209.42
February-20	\$ 293,799.46	\$ 295,806.13
March-20	\$ 209,649.75	\$ 285,629.22
April-20	\$ 112,555.10	\$ 270,565.03
May-20	\$ 186,750.70	\$ 260,209.82
June-20	\$ 302,437.85	\$ 259,143.13
July-20	\$ 321,577.68	\$ 260,285.65
August-20	\$ 310,197.48	\$ 261,942.27
September-20	\$ 298,468.49	\$ 263,007.15
October-20	\$ 342,489.72	\$ 267,529.85
November-20	\$ 312,180.57	\$ 270,197.96
December-20	\$ 318,441.48	\$ 273,881.36
January-21	\$ 349,102.86	\$ 279,804.26
February-21	\$ 310,013.09	\$ 281,155.40
March-21	\$ 424,278.98	\$ 299,041.17
April-21	\$ 450,845.88	\$ 327,232.07